

- Grand Station Hall**  
Irreg. 136 x 95 ft, 11,901 sqft, 14 ft ceiling
- Station 1**  
93 x 58 ft, 5,428 sqft, 14 ft ceiling
- Station 2**  
Irreg. 95 x 78 ft, 6,473 sqft, 14 ft ceiling
- Grand Station Prefunction**  
Irreg. 74 x 28 ft, 1,817 sqft, 14 ft ceiling
- Station Foyer**  
Irreg. 53 x 26 ft, 1,357 sqft, 20 ft ceiling
- Station A**  
?? x ?? ft, ?? sqft, ?? ft ceiling
- Station B**  
65 x 24 ft, 1,560 sqft, 10 ft ceiling

# Wedding

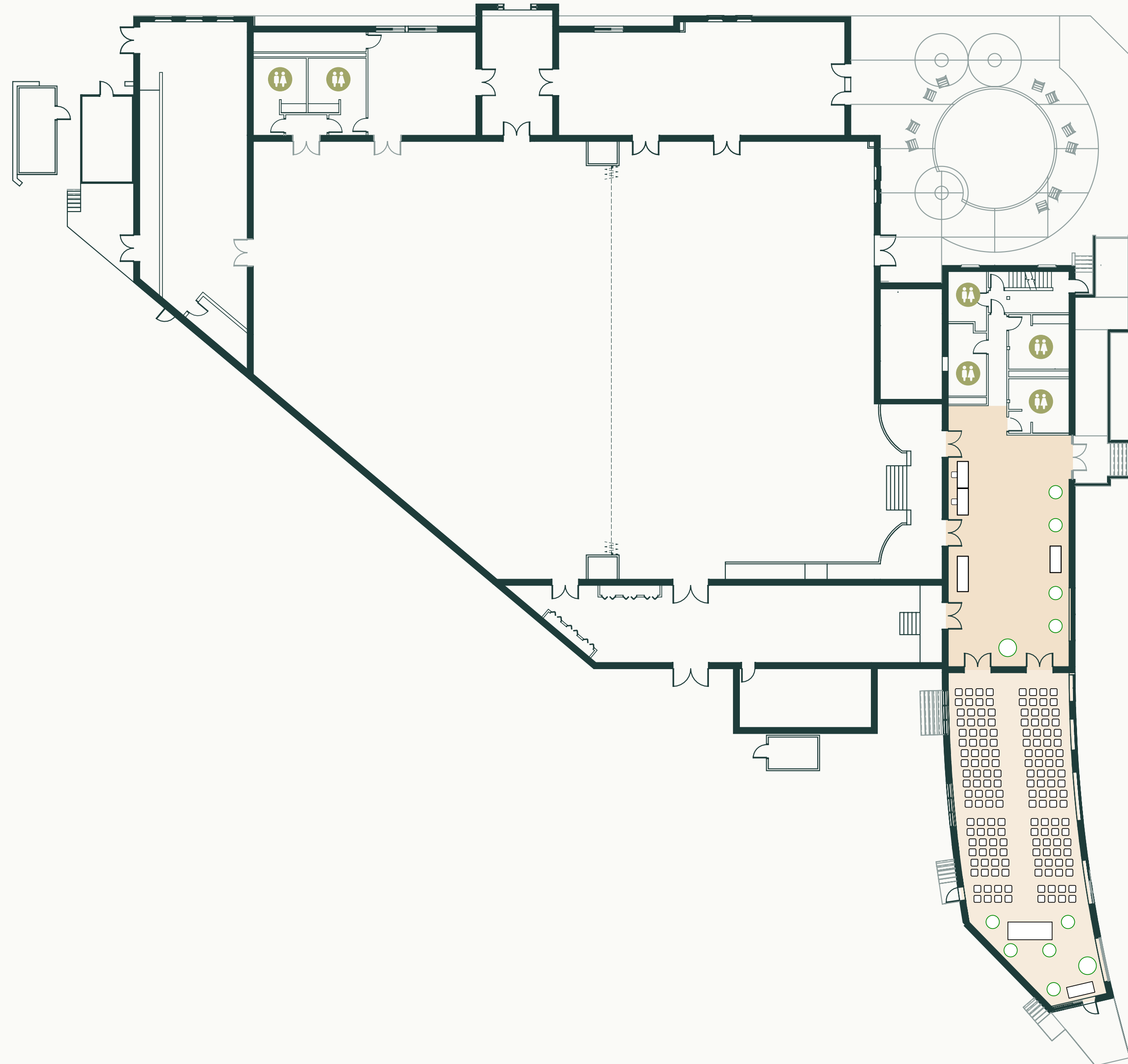
## Ceremony Foyer

Theater-Style

Seated: 160

Standing: 0

Compact ceremony setup using the foyer for intimate gatherings, vow exchanges, small services, or secondary ceremony moments.



**Grand Station Prefunction**

Irreg. 74 x 28 ft, 1,817 sqft, 14 ft ceiling

**Station Foyer**

Irreg. 53 x 26 ft, 1,357 sqft, 20 ft ceiling



# Wedding

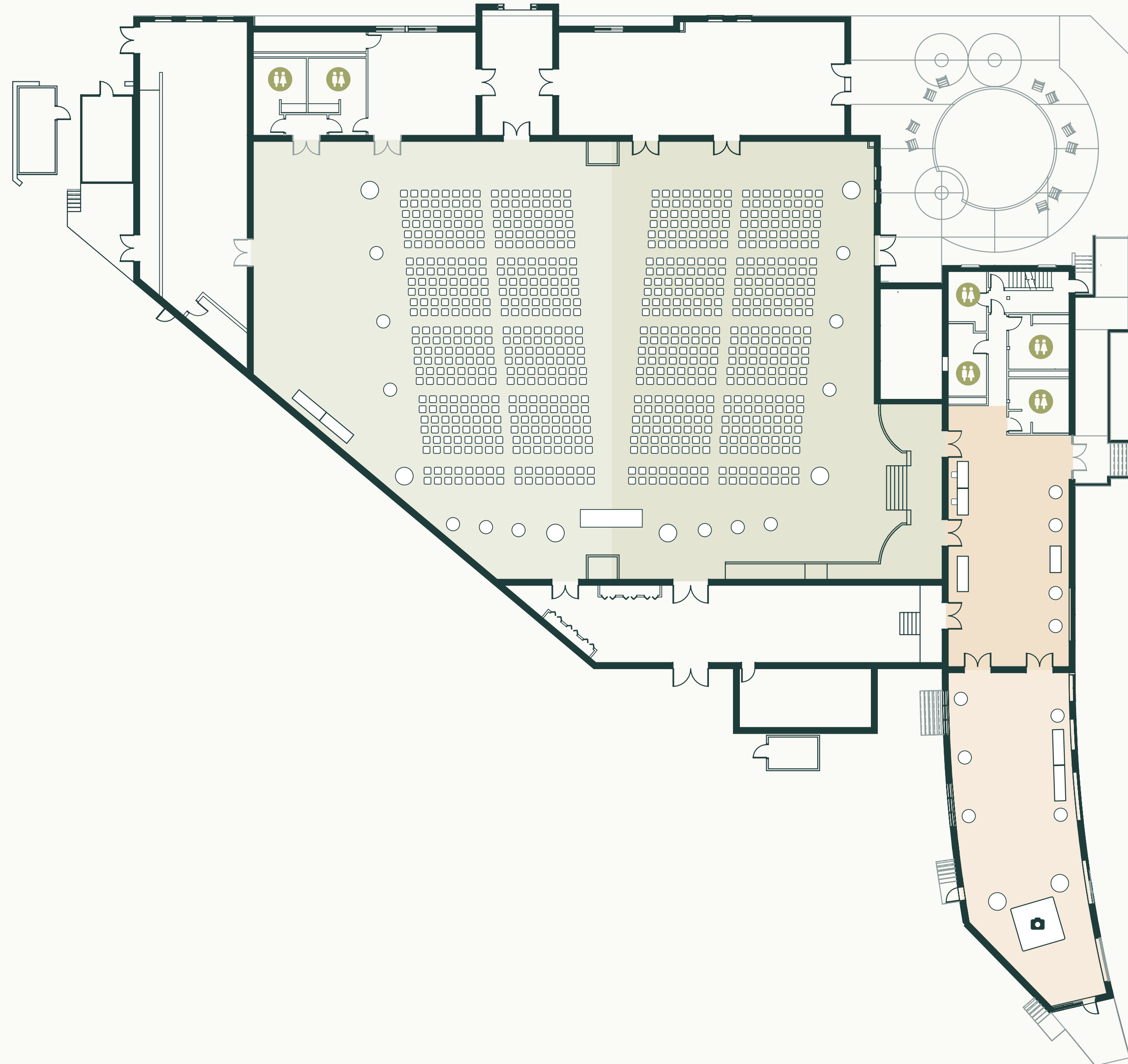
## Ceremony Full

Theater-Style

Seated: 832

Standing: 0

Full-hall ceremony layout with rows of guest seating, a central aisle, front focal point, and open perimeter circulation for large wedding ceremonies.



**Grand Station Hall**  
Irreg. 136 x 95 ft, 11,901 sqft, 14 ft ceiling

**Grand Station Prefunction**  
Irreg. 74 x 28 ft, 1,817 sqft, 14 ft ceiling

**Station Foyer**  
Irreg. 53 x 26 ft, 1,357 sqft, 20 ft ceiling

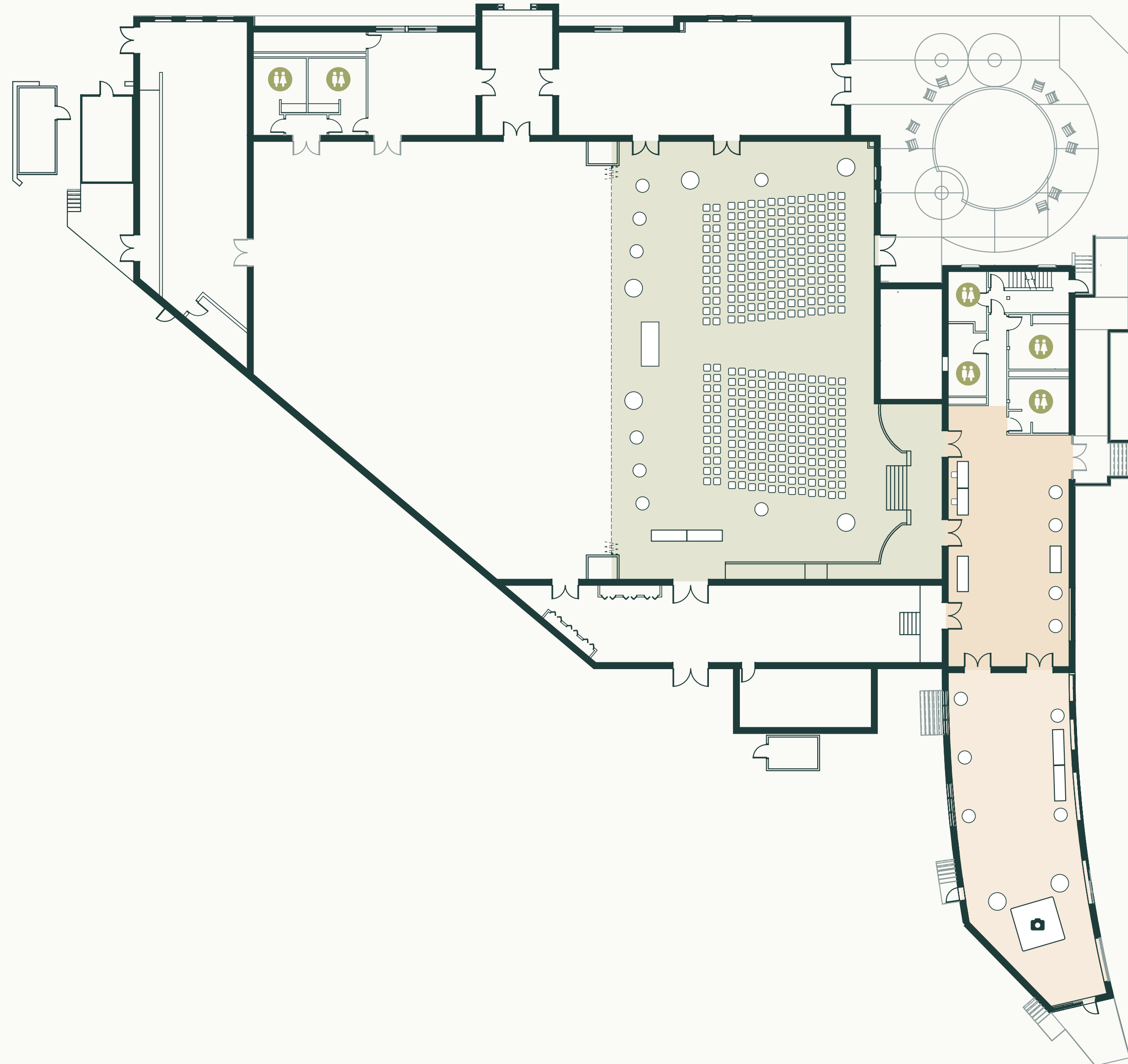


# Wedding

## Ceremony Half

Theater-Style  
Seated: 336  
Standing: 0

Smaller ceremony layout with central aisle seating, a front focal point, and a more intimate room arrangement for weddings.



- Station 1**  
93 x 58 ft, 5,428 sqft, 14 ft ceiling
- Grand Station Prefunction**  
Irreg. 74 x 28 ft, 1,817 sqft, 14 ft ceiling
- Station Foyer**  
Irreg. 53 x 26 ft, 1,357 sqft, 20 ft ceiling



# Wedding

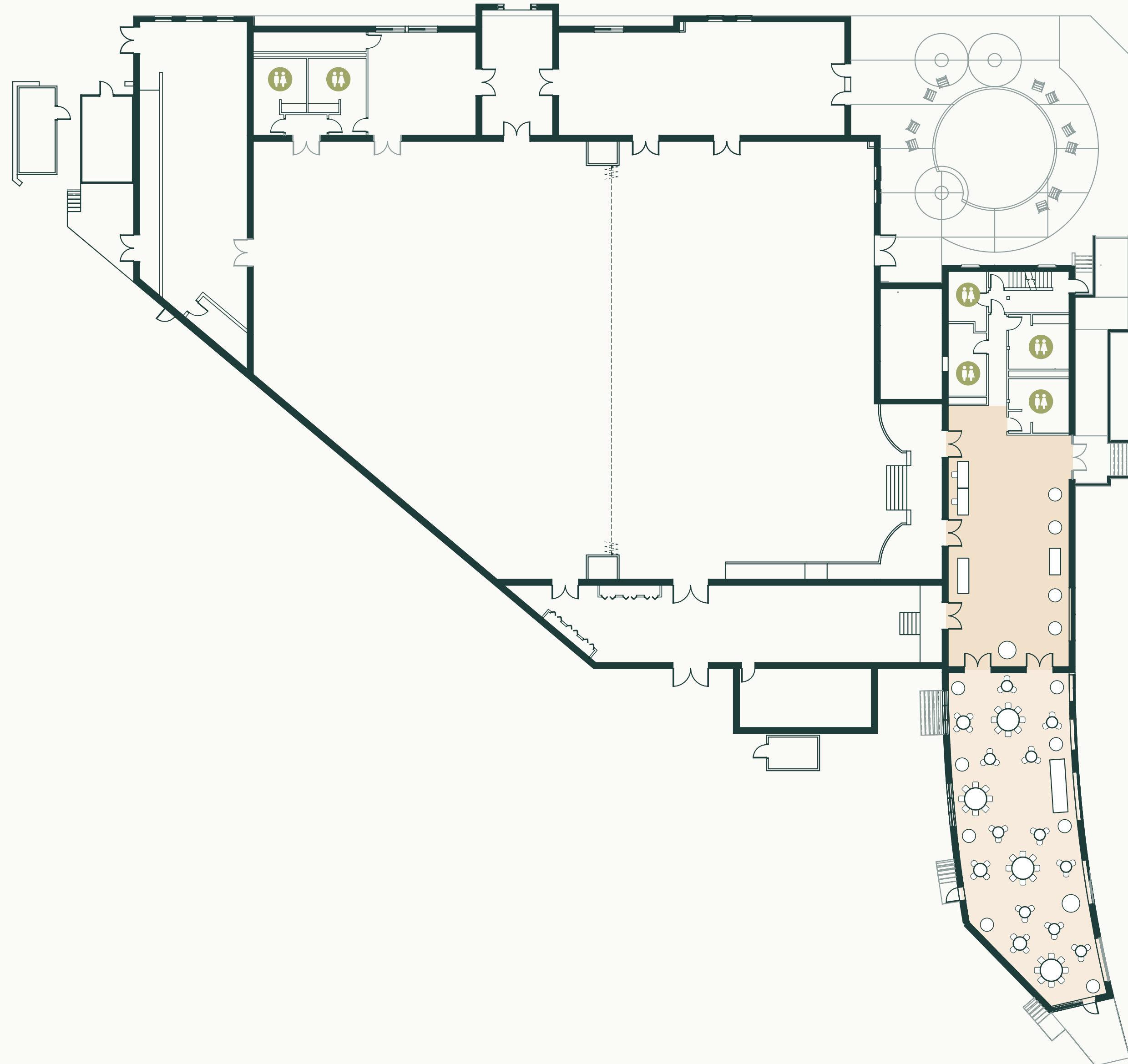
## Reception Foyer

Reception

Seated: 32

Standing: 42

Small reception or cocktail-style setup with guest seating, high-top tables, bar or beverage service, and flexible space for mingling.



**Grand Station Prefunction**  
Irreg. 74 x 28 ft, 1,817 sqft, 14 ft ceiling

**Station Foyer**  
Irreg. 53 x 26 ft, 1,357 sqft, 20 ft ceiling



# Wedding

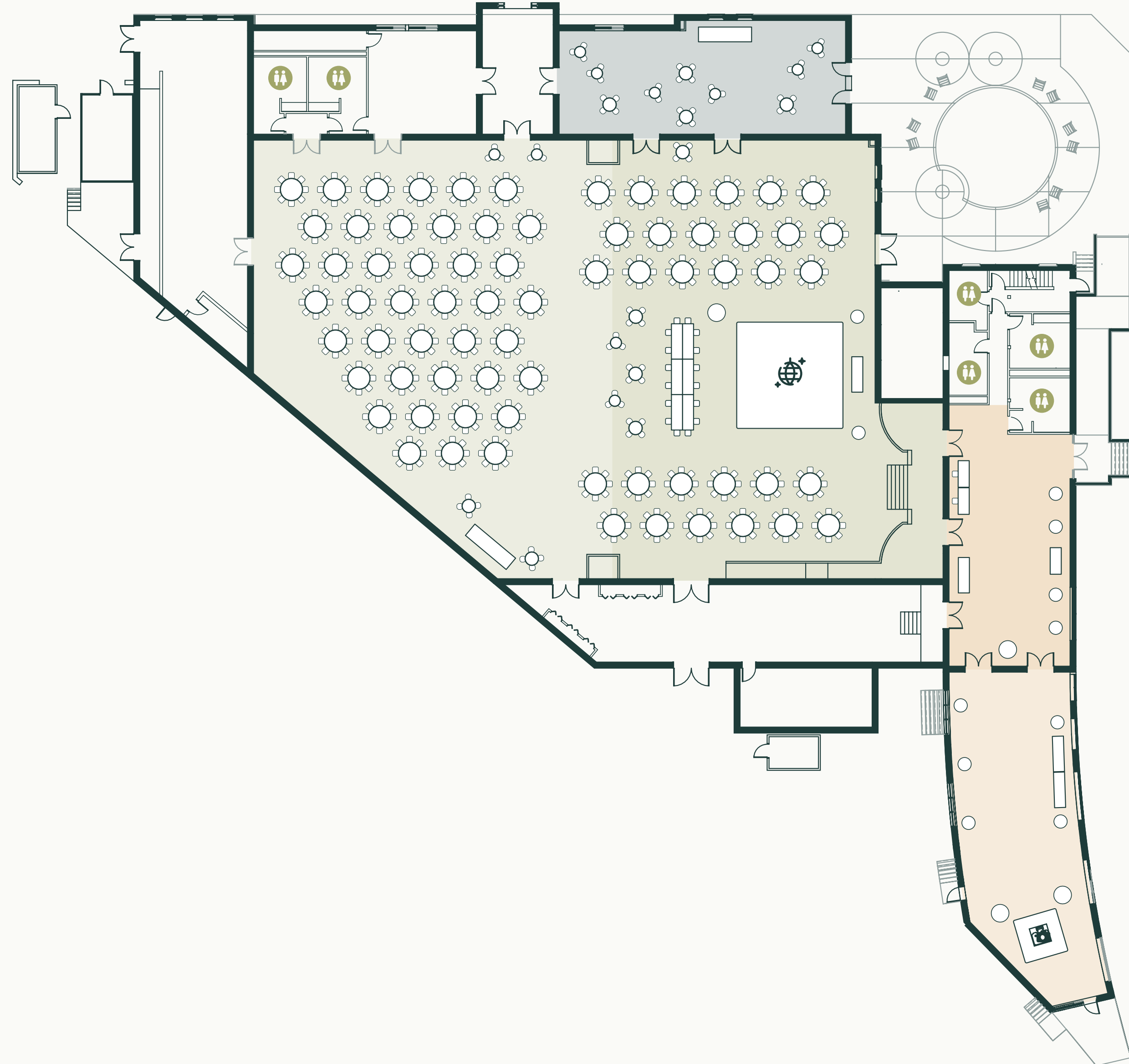
## Reception Full

Reception

Seated: 584

Standing: 70

Full-hall seated reception layout with guest rounds, dance floor, DJ, bar, cake/gift tables, and space for formal dinner and celebration.



- Grand Station Hall**  
Irreg. 136 x 95 ft, 11,901 sqft, 14 ft ceiling
- Grand Station Prefunction**  
Irreg. 74 x 28 ft, 1,817 sqft, 14 ft ceiling
- Station Foyer**  
Irreg. 53 x 26 ft, 1,357 sqft, 20 ft ceiling
- Station B**  
65 x 24 ft, 1,560 sqft, 10 ft ceiling

# Wedding

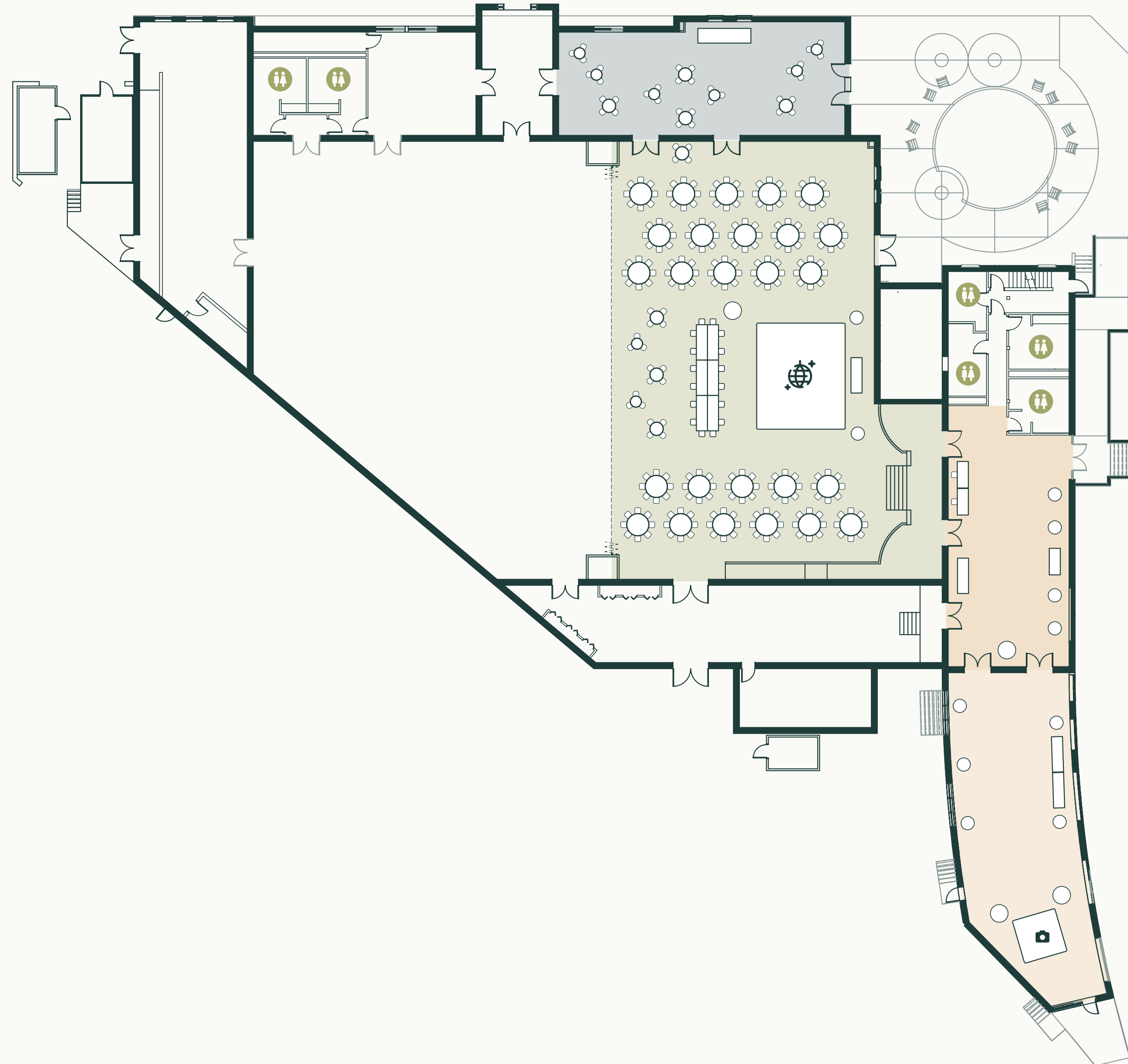
## Reception Half

Reception

Seated: 224

Standing: 56

Smaller seated reception layout with guest tables, dance floor, DJ, bar, and support tables for a more intimate wedding or social celebration.



- Station 1**  
93 x 58 ft, 5,428 sqft, 14 ft ceiling
- Grand Station Prefunction**  
Irreg. 74 x 28 ft, 1,817 sqft, 14 ft ceiling
- Station Foyer**  
Irreg. 53 x 26 ft, 1,357 sqft, 20 ft ceiling
- Station B**  
65 x 24 ft, 1,560 sqft, 10 ft ceiling